

Maritime Safety Queensland



Manly Boat Harbour

Beacon to Beacon Guide

Southern Moreton Bay

Published by

Maritime Safety Queensland

© Copyright The State of Queensland
(Department of Transport and Main Roads) 2014



To view a copy of this licence, visit
<http://creativecommons.org/licenses/by/3.0/au>

For commercial use terms and conditions

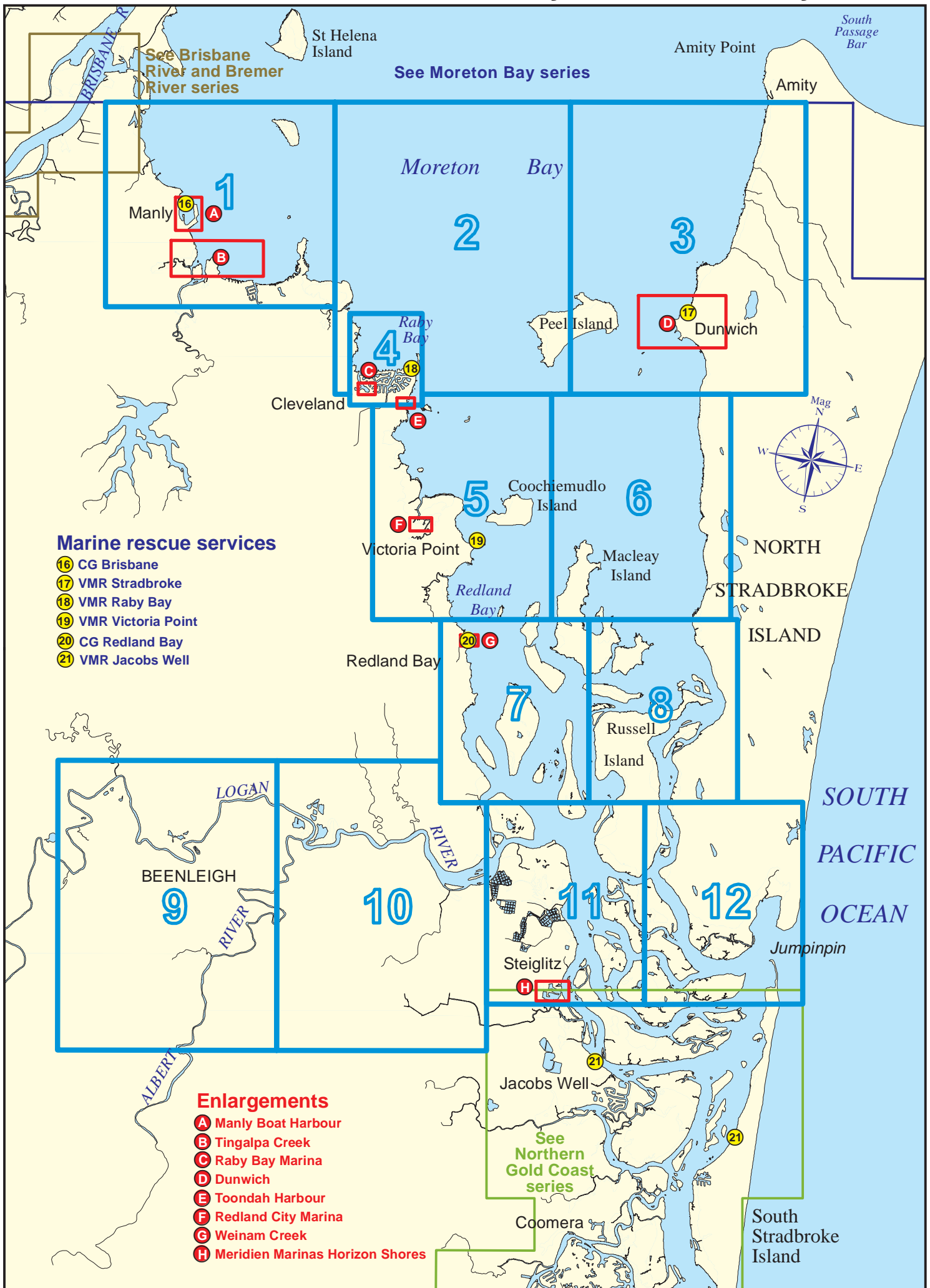
Please visit the Maritime Safety Queensland
website at www.msq.qld.gov.au

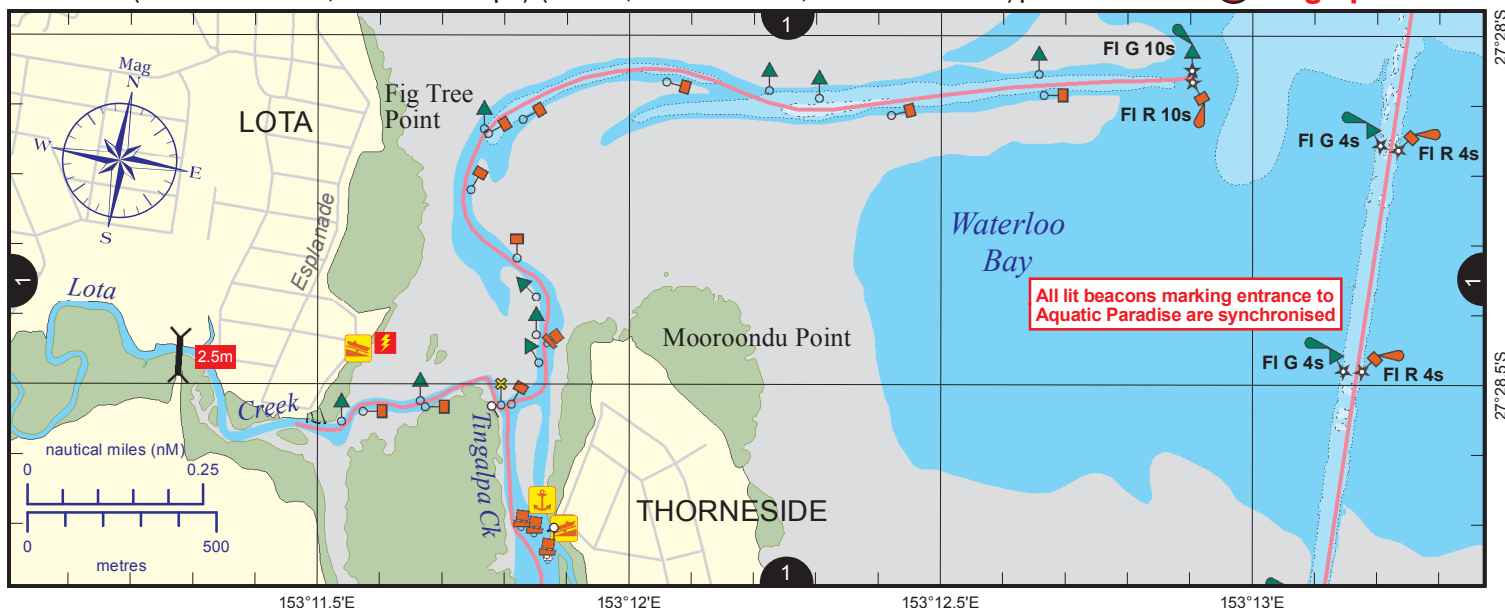
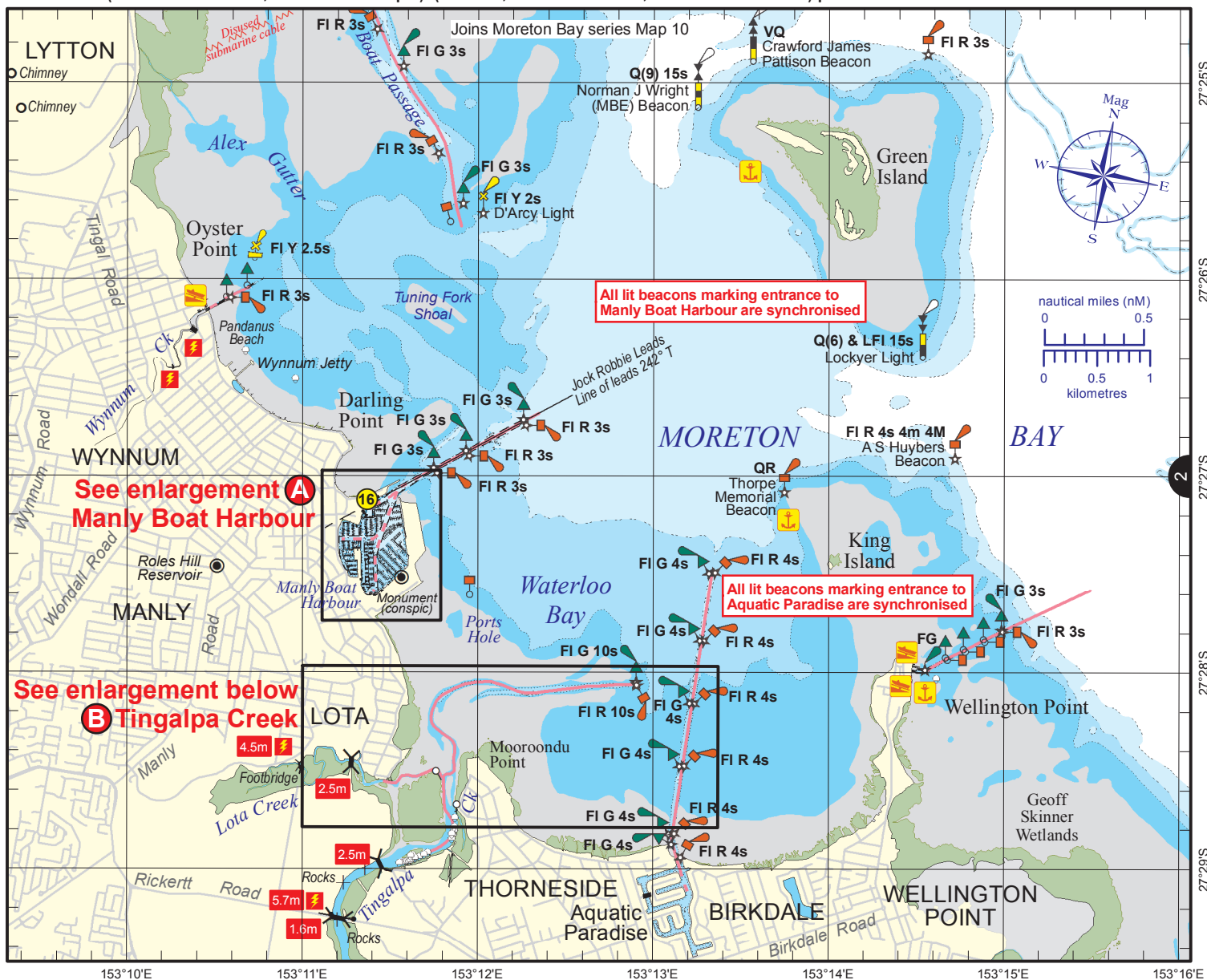
'How to' use this guide

Use this Beacon to Beacon Guide with
the 'How to' and legend booklet available from
www.msq.qld.gov.au

Southern Moreton Bay

Key Sheet





Always keep a proper lookout when boating.

Look up and live for power and cable crossings that may not be shown on these maps due to scale or recent construction.

CAUTION: depth contours have not been re-surveyed in most areas since the 2011 and 2013 floods.

Exercise care when travelling outside suggested navigation tracks.

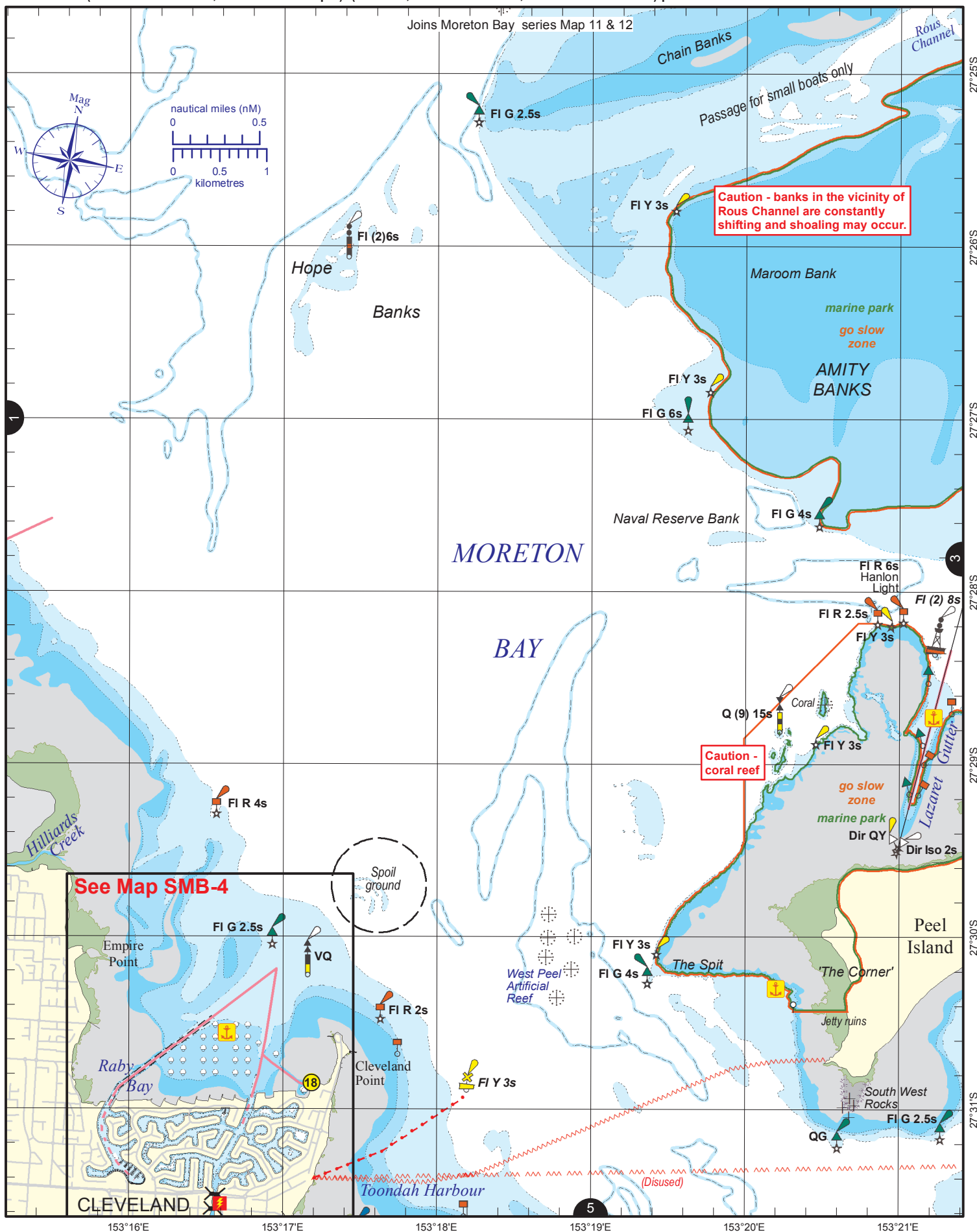
Nautical information current to 16 June 2014.

© Copyright The State of Queensland 2014

Queensland Department of Transport and Main Roads - Maritime Safety Queensland.

To reproduce any map within this series, see terms and conditions at Maritime Safety Queensland's website (www.msq.qld.gov.au)





Always keep a proper lookout when boating.

Look up and live for power and cable crossings that may not be shown on these maps due to scale or recent construction.

CAUTION: depth contours have not been re-surveyed in most areas since the 2011 and 2013 floods.

Exercise care when travelling outside suggested navigation tracks.

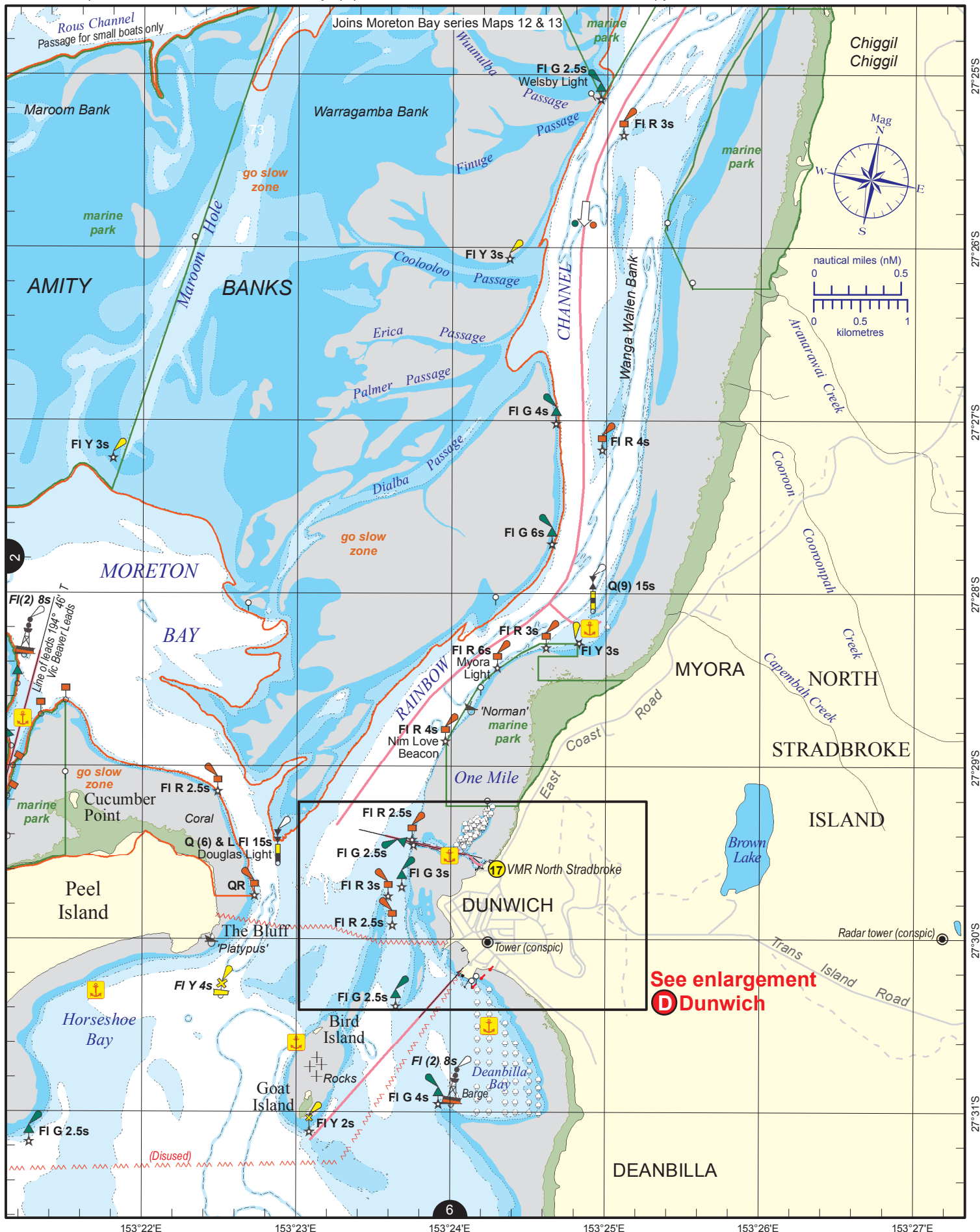
© Copyright The State of Queensland 2014

Queensland Department of Transport and Main Roads - Maritime Safety Queensland.

To reproduce any map within this series, see terms and conditions at Maritime Safety Queensland's website (www.msq.qld.gov.au)

Nautical information current to 16 June 2014.





Always keep a proper lookout when boating.

Look up and live for power and cable crossings that may not be shown on these maps due to scale or recent construction.

CAUTION: depth contours have not been re-surveyed in most areas since the 2011 and 2013 floods.

Exercise care when travelling outside suggested navigation tracks.

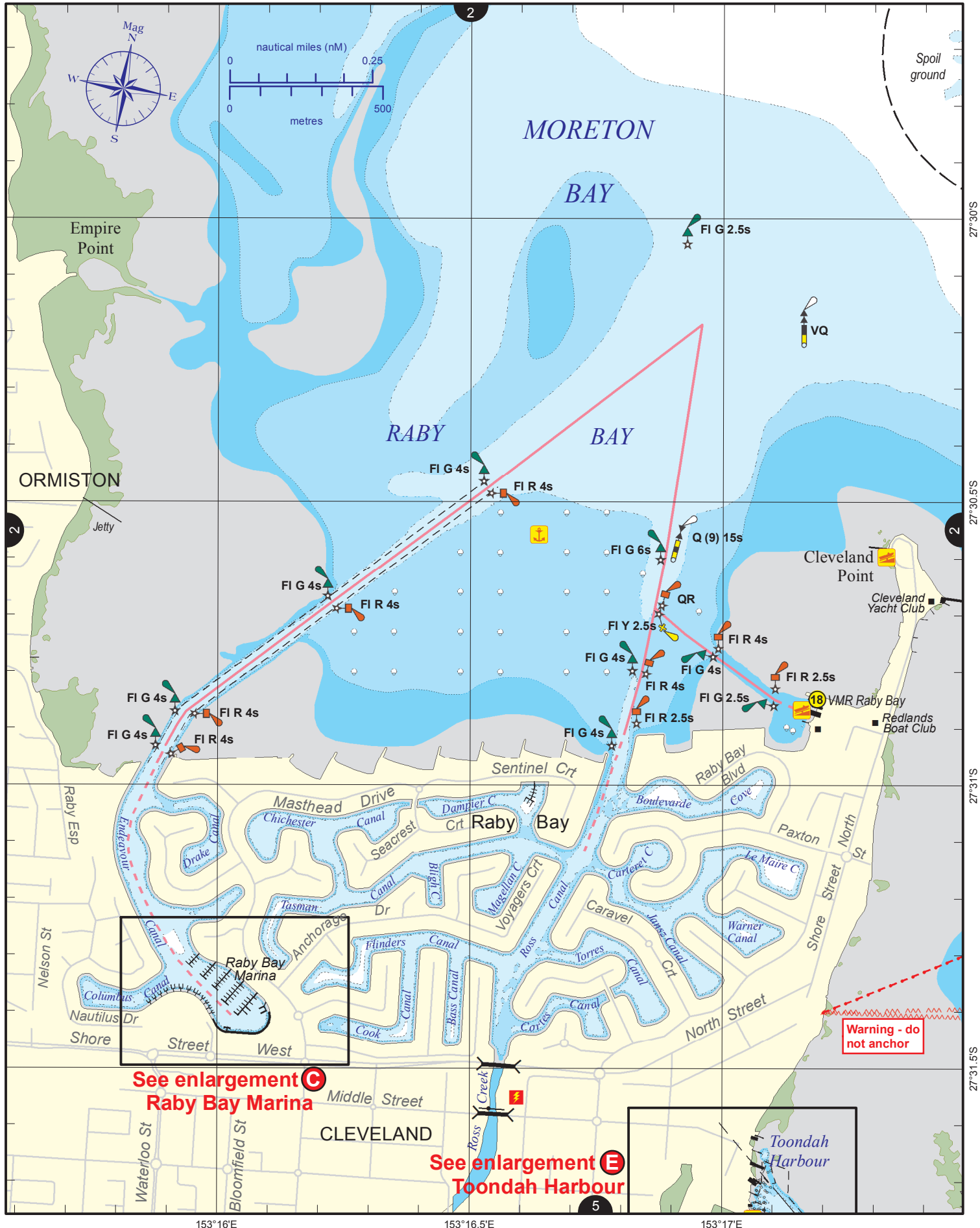
© Copyright The State of Queensland 2014

Queensland Department of Transport and Main Roads - Maritime Safety Queensland.

To reproduce any map within this series, see terms and conditions at Maritime Safety Queensland's website (www.msq.qld.gov.au)

Nautical information current to 16 June 2014.





Always keep a proper lookout when boating.

Look up and live for power and cable crossings that may not be shown on these maps due to scale or recent construction.

CAUTION: depth contours have not been re-surveyed in most areas since the 2011 and 2013 floods.

Exercise care when travelling outside suggested navigation tracks.

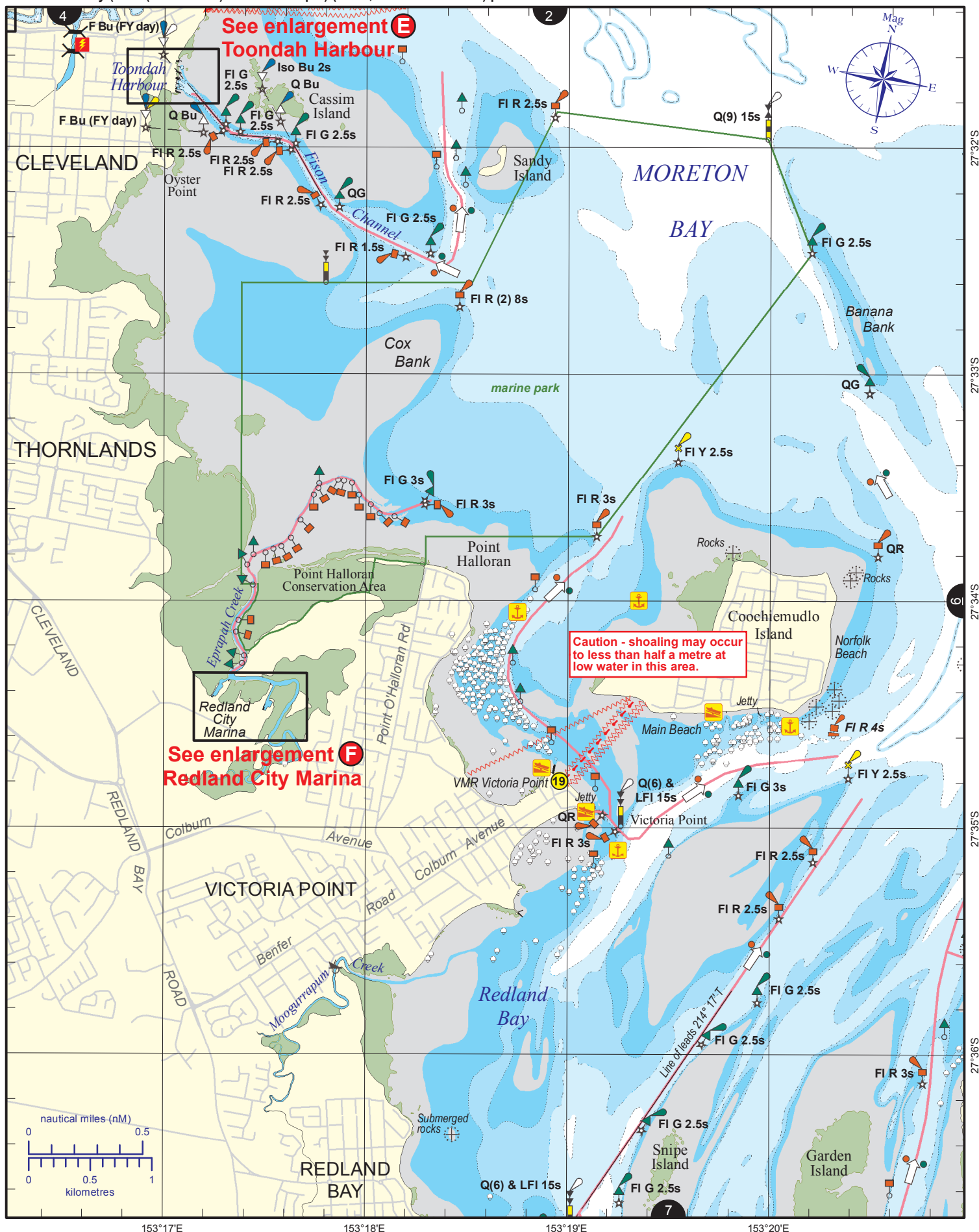
© Copyright The State of Queensland 2014

Queensland Department of Transport and Main Roads - Maritime Safety Queensland.

To reproduce any map within this series, see terms and conditions at Maritime Safety Queensland's website (www.msq.qld.gov.au)

Nautical information current to 16 June 2014.





Always keep a proper lookout when boating.

Look up and live for power and cable crossings that may not be shown on these maps due to scale or recent construction.

CAUTION: depth contours have not been re-surveyed in most areas since the 2011 and 2013 floods.

Exercise care when travelling outside suggested navigation tracks.

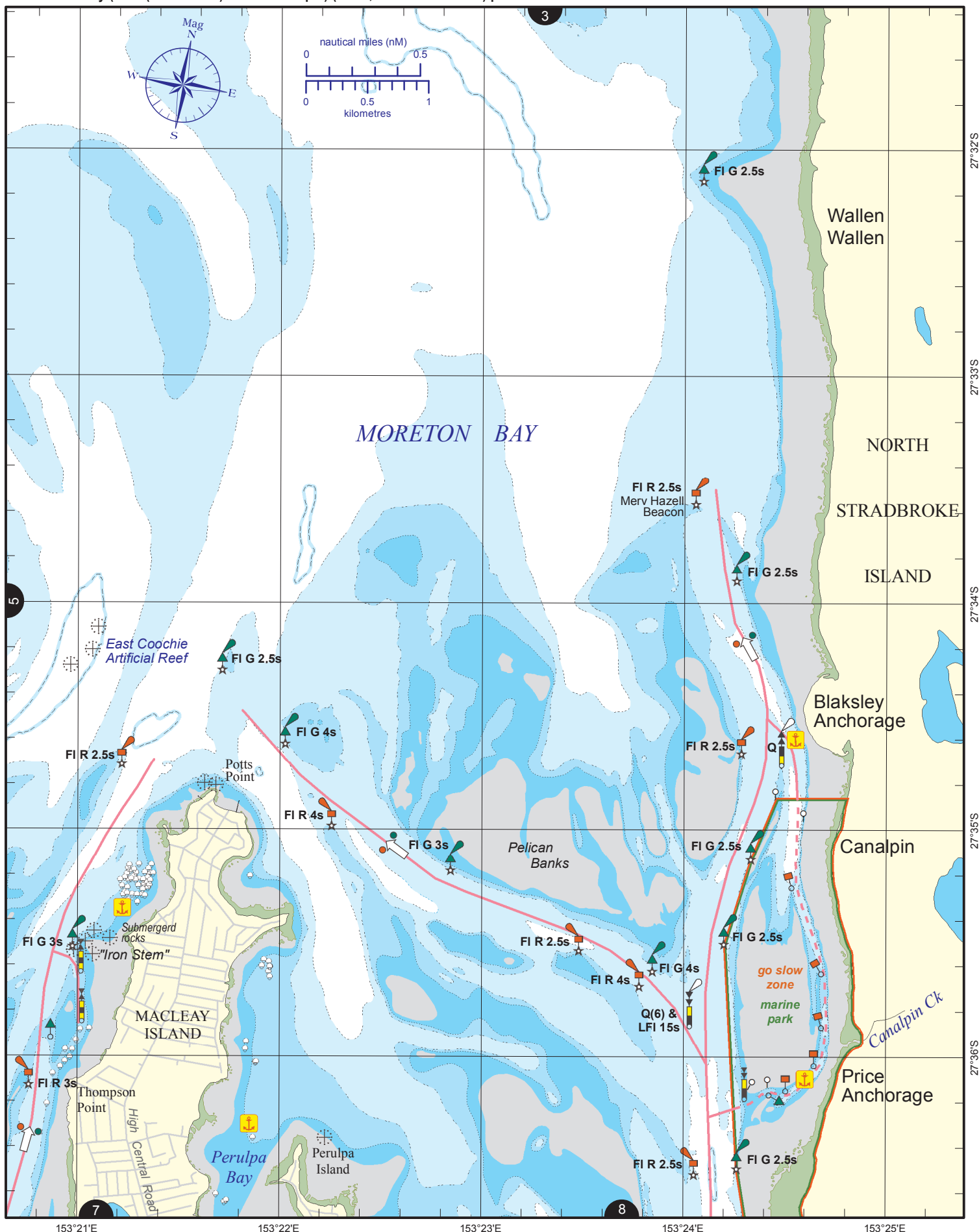
Nautical information current to 16 June 2014.

© Copyright The State of Queensland 2014

Queensland Department of Transport and Main Roads - Maritime Safety Queensland.

To reproduce any map within this series, see terms and conditions at Maritime Safety Queensland's website (www.msq.qld.gov.au)





Always keep a proper lookout when boating.

Look up and live for power and cable crossings that may not be shown on these maps due to scale or recent construction.

CAUTION: depth contours have not been re-surveyed in most areas since the 2011 and 2013 floods.

Exercise care when travelling outside suggested navigation tracks.

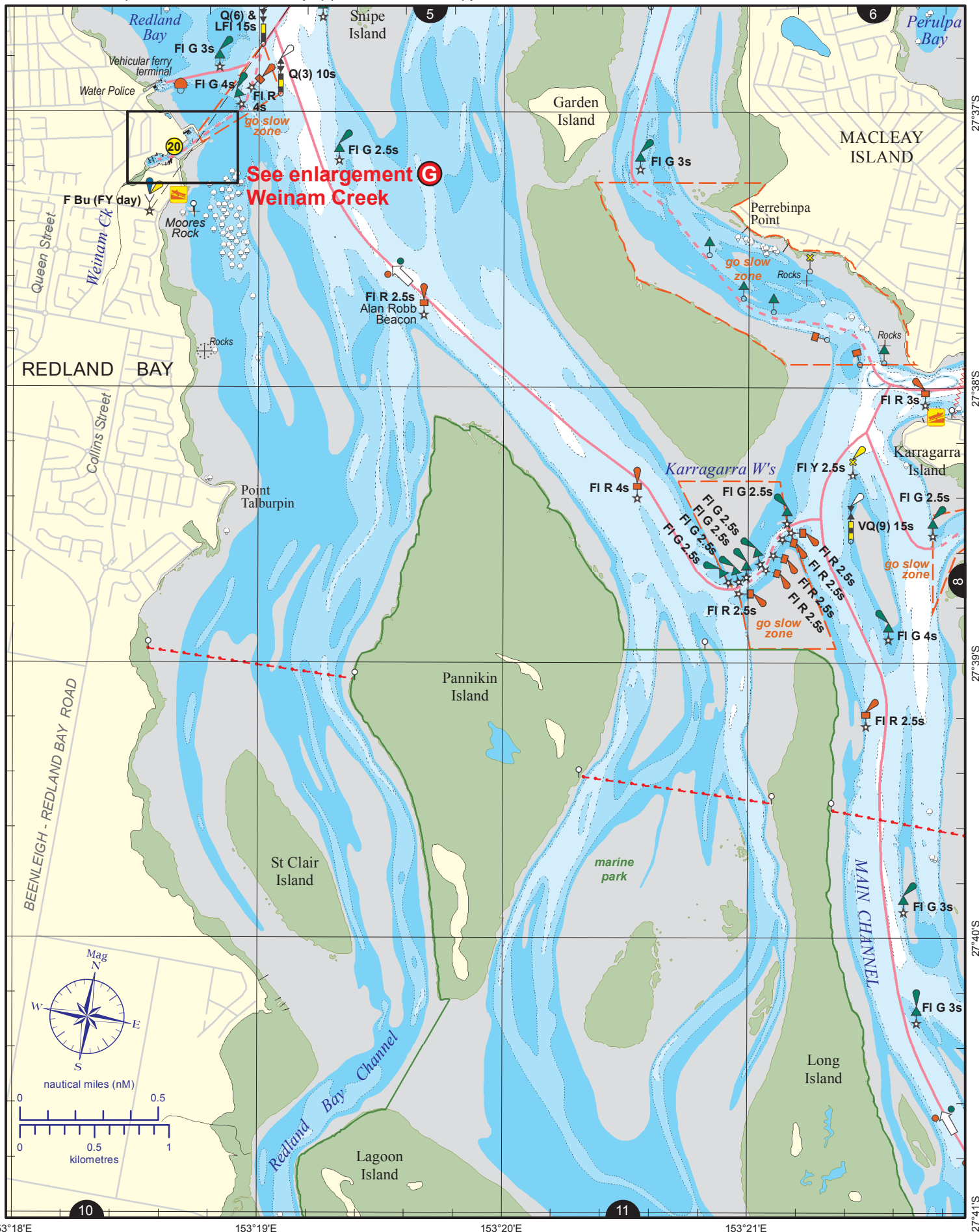
Nautical information current to 16 June 2014.

© Copyright The State of Queensland 2014

Queensland Department of Transport and Main Roads - Maritime Safety Queensland.

To reproduce any map within this series, see terms and conditions at Maritime Safety Queensland's website (www.msq.qld.gov.au)





Always keep a proper lookout when boating.

Look up and live for power and cable crossings that may not be shown on these maps due to scale or recent construction.

CAUTION: depth contours have not been re-surveyed in most areas since the 2011 and 2013 floods.

Exercise care when travelling outside suggested navigation tracks.

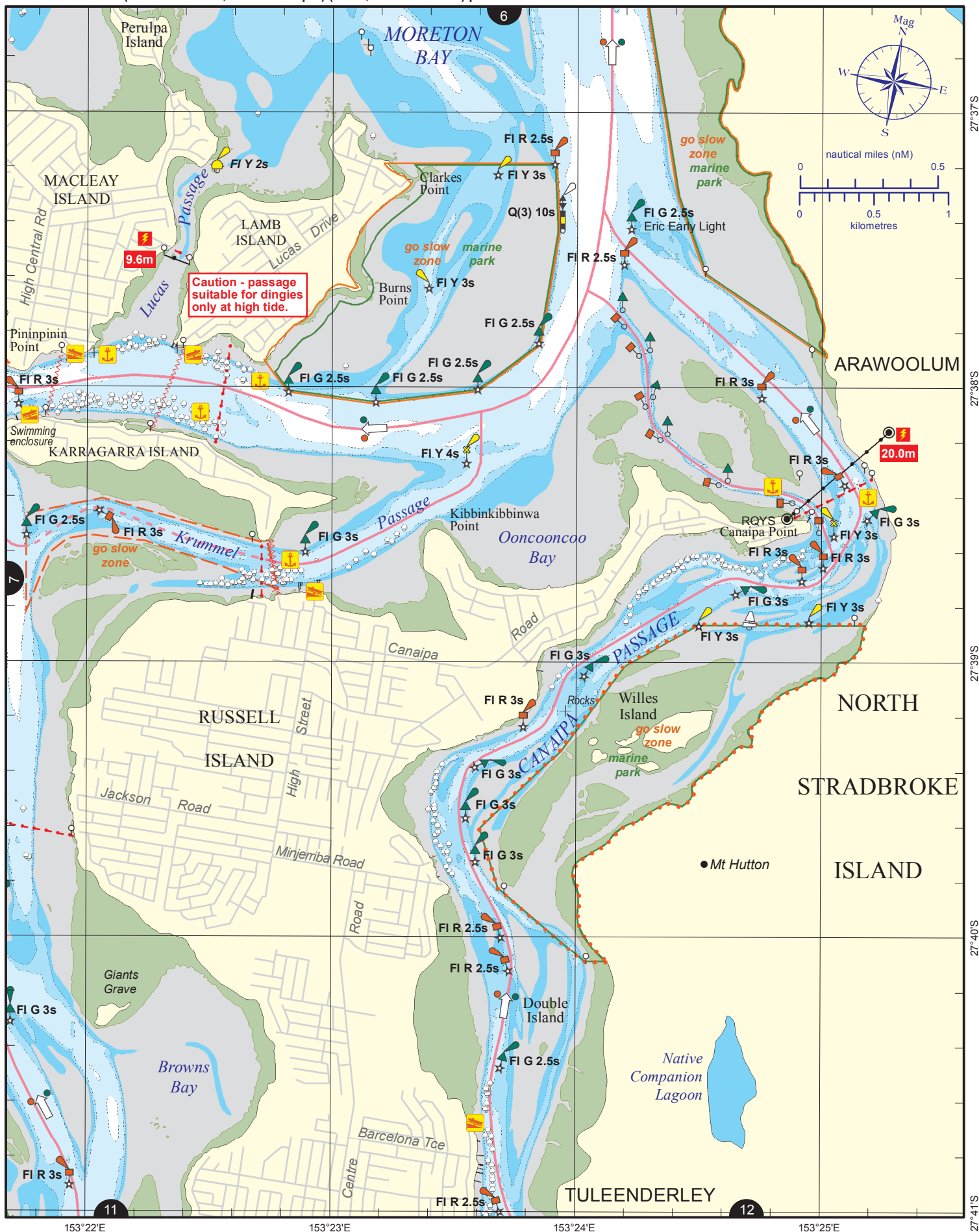
Nautical information current to 16 June 2014.

© Copyright The State of Queensland 2014

Queensland Department of Transport and Main Roads - Maritime Safety Queensland.

To reproduce any map within this series, see terms and conditions at Maritime Safety Queensland's website (www.msq.qld.gov.au)





Always keep a proper lookout when boating.

Look up and live for power and cable crossings that may not be shown on these maps due to scale or recent construction.

CAUTION: depth contours have not been re-surveyed in most areas since the 2011 and 2013 floods.

Exercise care when travelling outside suggested navigation tracks.

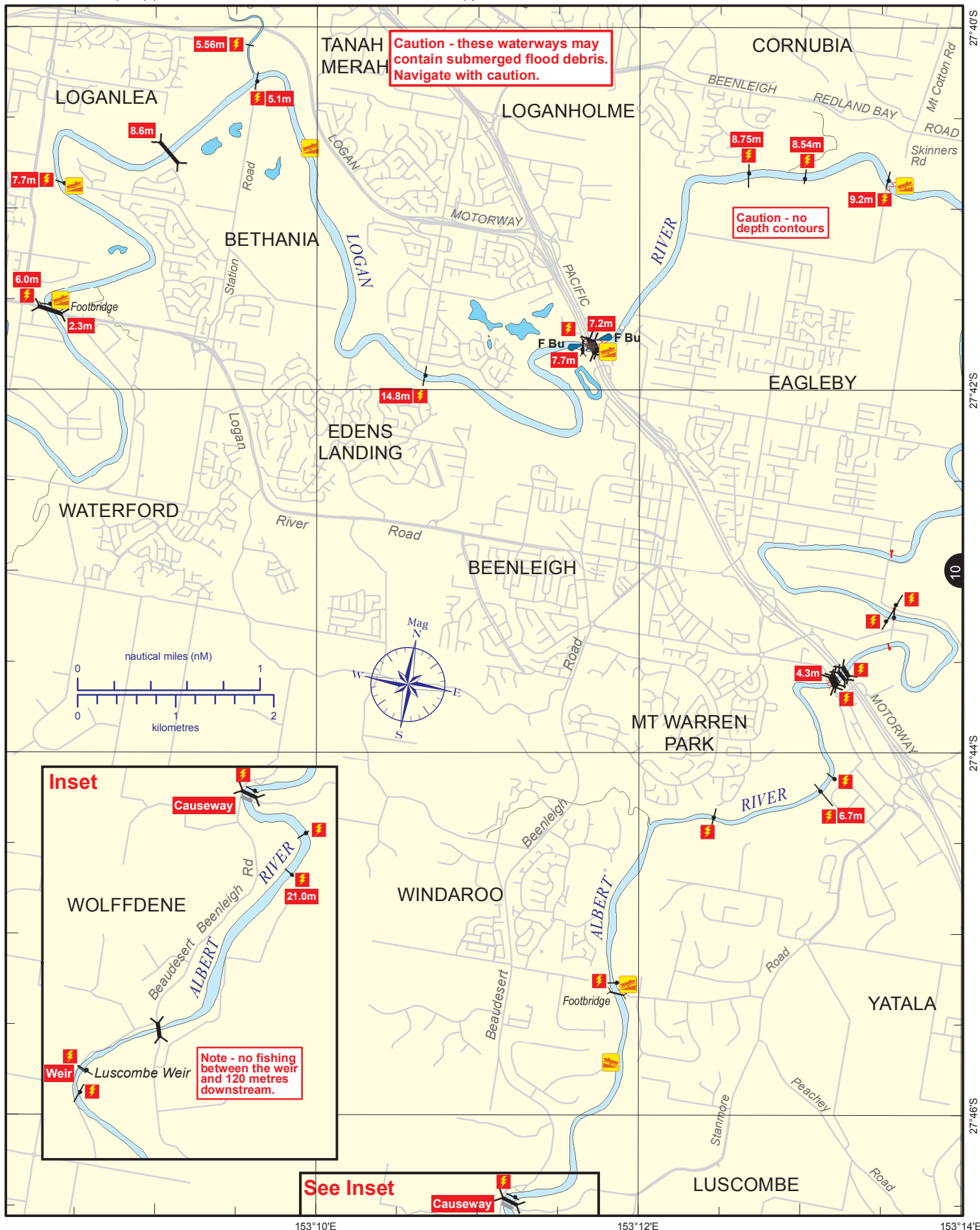
© Copyright The State of Queensland 2014

Queensland Department of Transport and Main Roads - Maritime Safety Queensland.

To reproduce any map within this series, see terms and conditions at Maritime Safety Queensland's website (www.msq.qld.gov.au)

Nautical information current to 16 June 2014.





153°10'E

153°12'E

153°14'E

Always keep a proper lookout when boating.

Look up and live for power and cable crossings that may not be shown on these maps due to scale or recent construction.

CAUTION: depth contours have not been re-surveyed in most areas since the 2011 and 2013 floods.

Exercise care when travelling outside suggested navigation tracks.

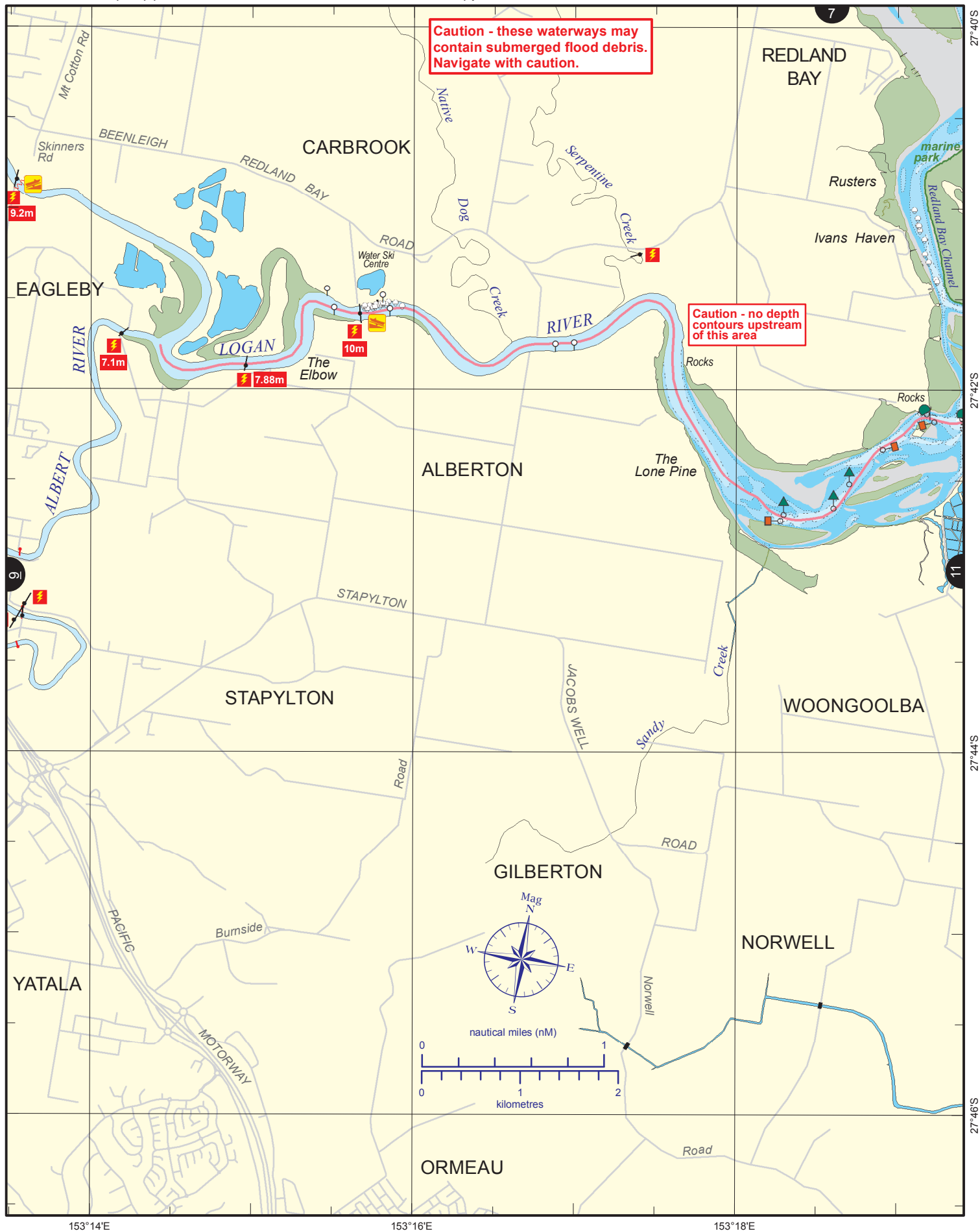
© Copyright The State of Queensland 2014

Queensland Department of Transport and Main Roads - Maritime Safety Queensland.

To reproduce any map within this series, see terms and conditions at Maritime Safety Queensland's website (www.msq.qld.gov.au)

Nautical information current to 16 June 2014.





Always keep a proper lookout when boating.

Look up and live for power and cable crossings that may not be shown on these maps due to scale or recent construction.

CAUTION: depth contours have not been re-surveyed in most areas since the 2011 and 2013 floods.

Exercise care when travelling outside suggested navigation tracks.

Nautical information current to 16 June 2014.

© Copyright The State of Queensland 2014

Queensland Department of Transport and Main Roads - Maritime Safety Queensland.

To reproduce any map within this series, see terms and conditions at Maritime Safety Queensland's website (www.msq.qld.gov.au)









Always keep a proper lookout when boating.

Look up and live for power and cable crossings that may not be shown on these maps due to scale or recent construction.

CAUTION: depth contours have not been re-surveyed in most areas since the 2011 and 2013 floods.

Exercise care when travelling outside suggested navigation tracks.

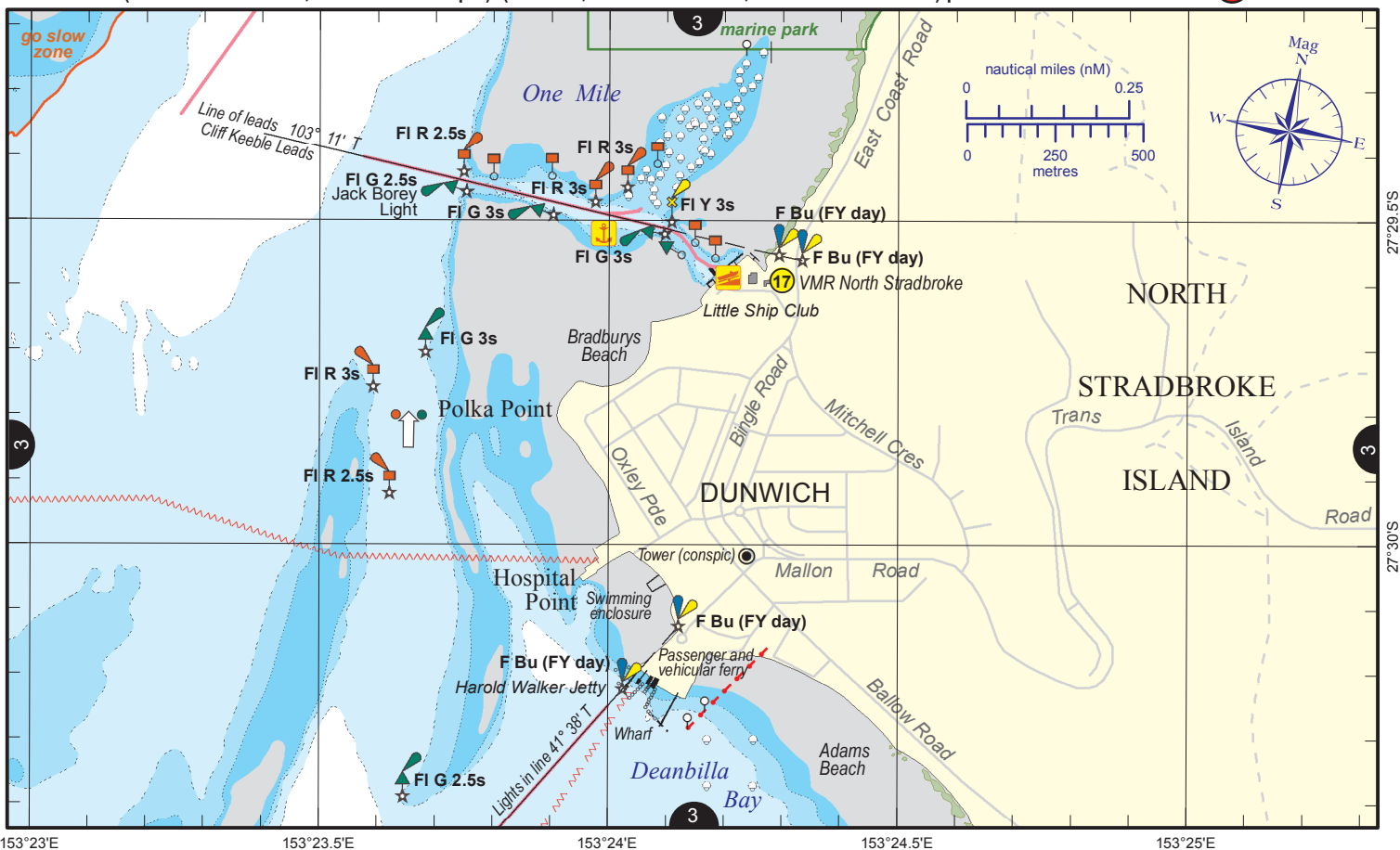
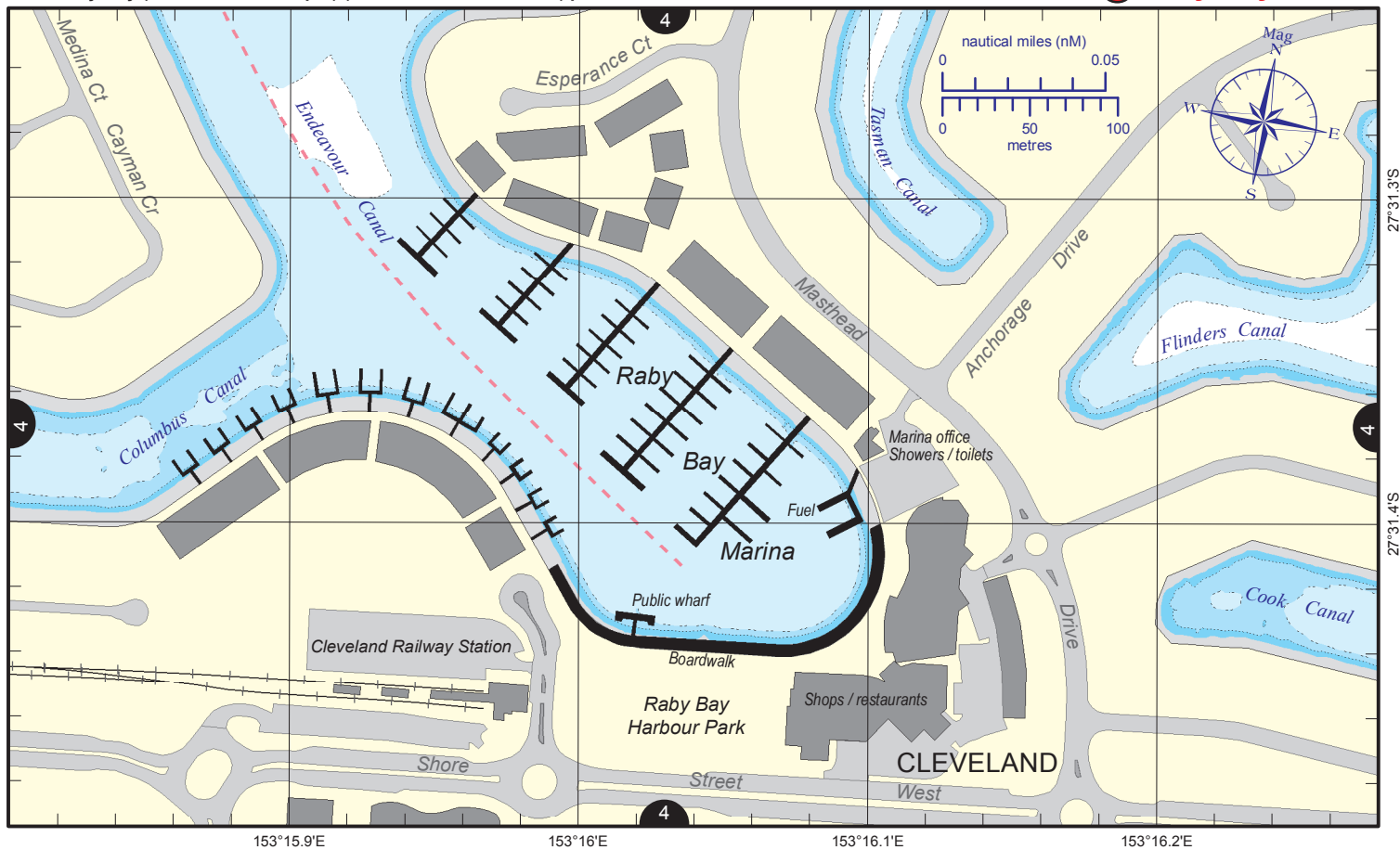
© Copyright The State of Queensland 2014

Queensland Department of Transport and Main Roads - Maritime Safety Queensland.

To reproduce any map within this series, see terms and conditions at Maritime Safety Queensland's website (www.msq.qld.gov.au)

Nautical information current to 16 June 2014.





Always keep a proper lookout when boating.

Look up and live for power and cable crossings that may not be shown on these maps due to scale or recent construction.

CAUTION: depth contours have not been re-surveyed in most areas since the 2011 and 2013 floods.

Exercise care when travelling outside suggested navigation tracks.

© Copyright The State of Queensland 2014

Queensland Department of Transport and Main Roads - Maritime Safety Queensland.

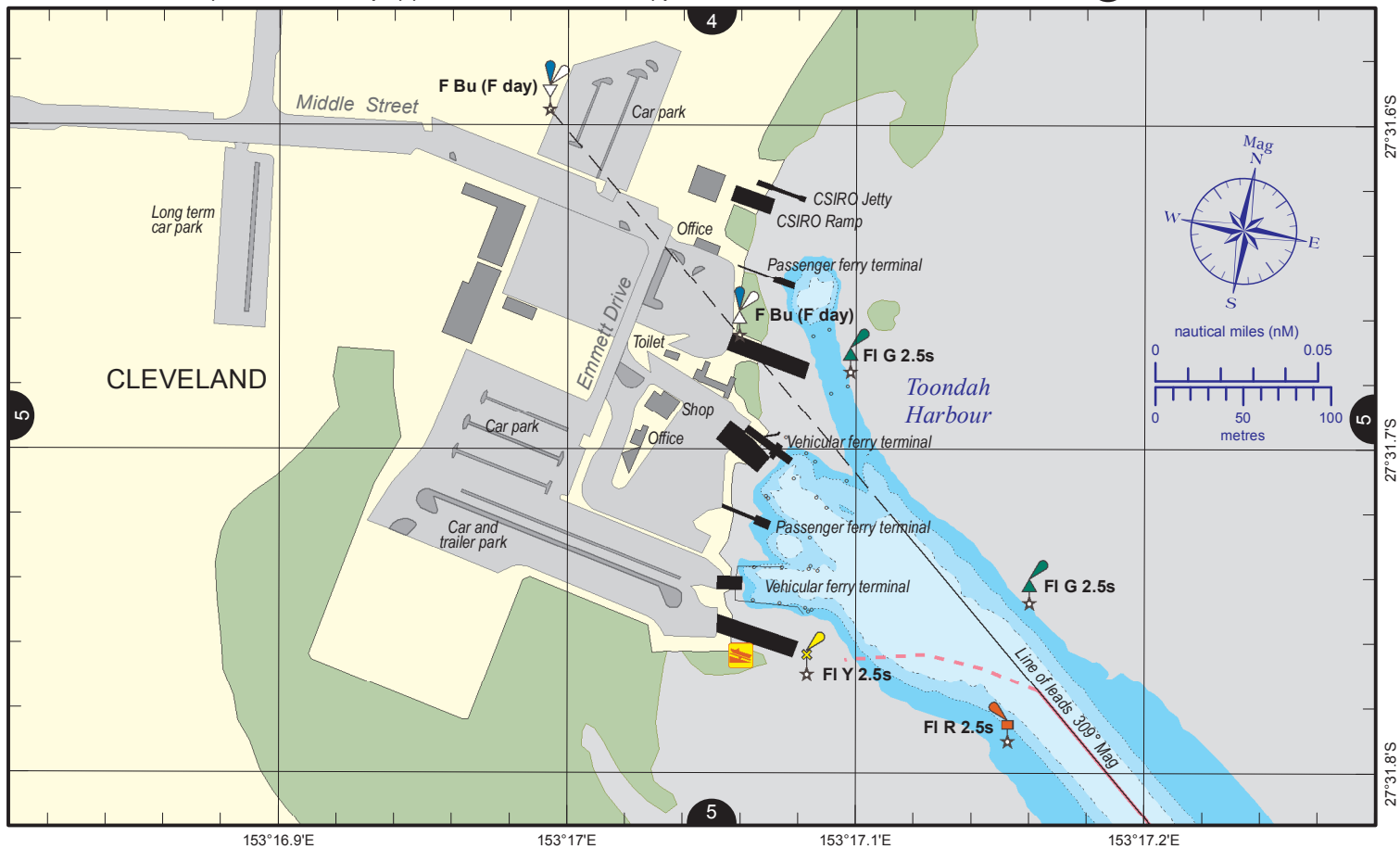
To reproduce any map within this series, see terms and conditions at Maritime Safety Queensland's website (www.msq.qld.gov.au)

Nautical information current to 16 June 2014.



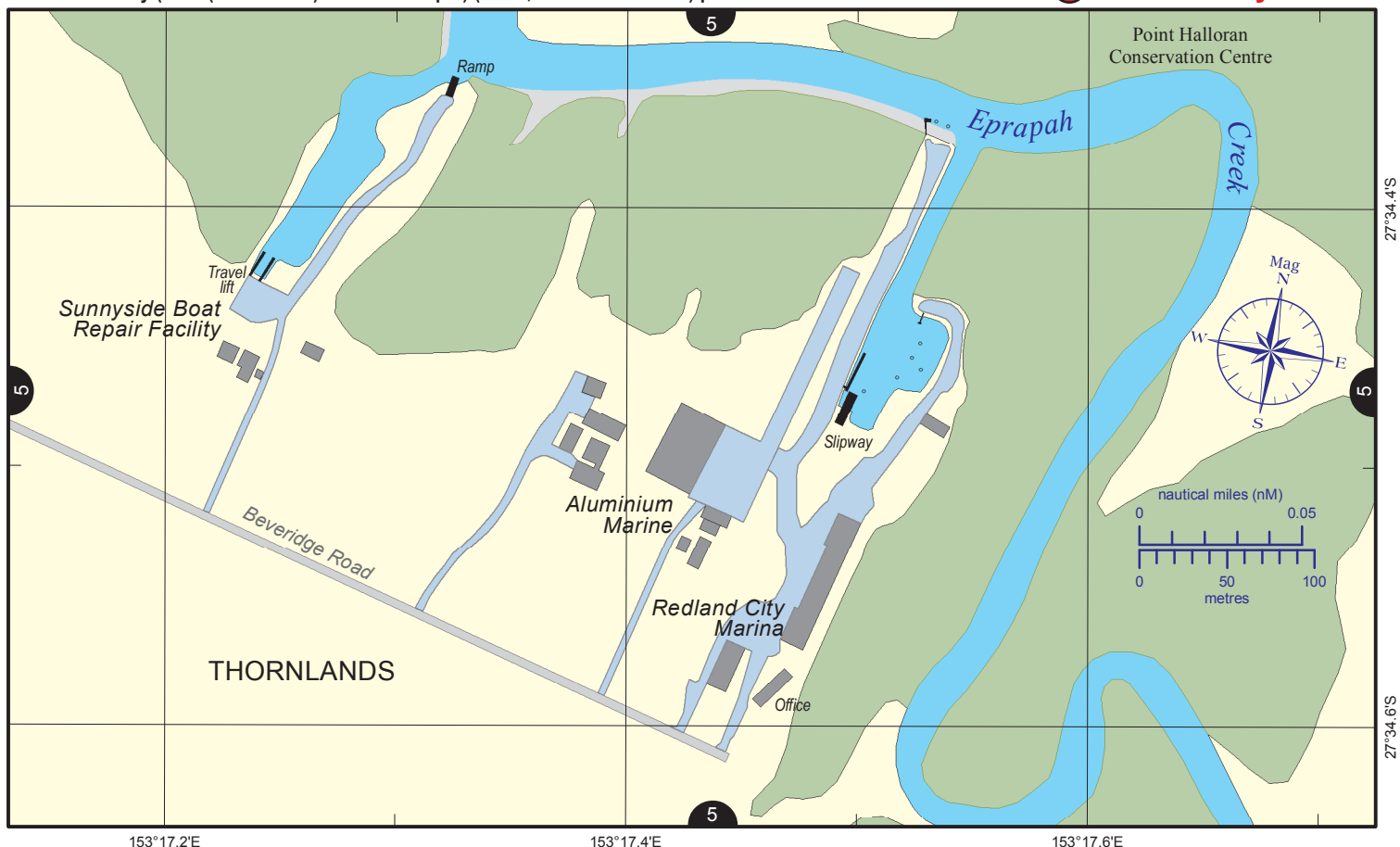
VMR Raby Bay (0600 – 1800 w/e – p/h) (88-90, 16-67-21-73-81-82) ph 3821 2244
 VMR North Stradbroke (0730 – 1630 w/e – p/h) (88-90, 16-67-12-13-80-81-82) ph 3409 9338

E Toondah Harbour



VMR Victoria Point (0630 – 1700 w/e, 0700 - 1700 p/h) (88-90, 16-67-73-81-82) ph 3207 8717
 CG Redland Bay (0600 (0700 winter) – 1700 w/e – p/h) (88-90, 16-67-13-63-73-81) ph 3206 7777

F Redland City Marina



Always keep a proper lookout when boating.

Look up and live for power and cable crossings that may not be shown on these maps due to scale or recent construction.

CAUTION: depth contours have not been re-surveyed in most areas since the 2011 and 2013 floods.

Exercise care when travelling outside suggested navigation tracks.

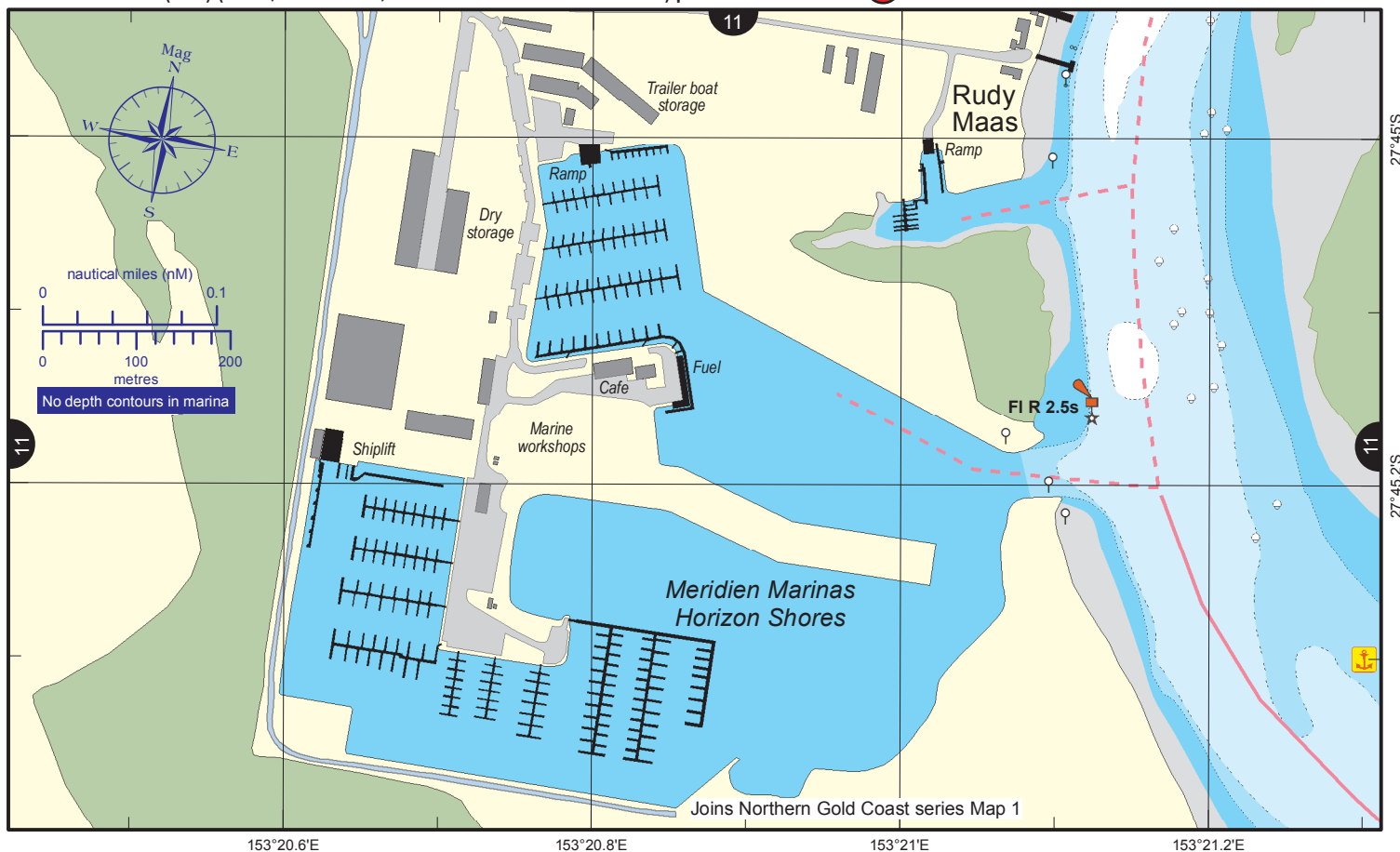
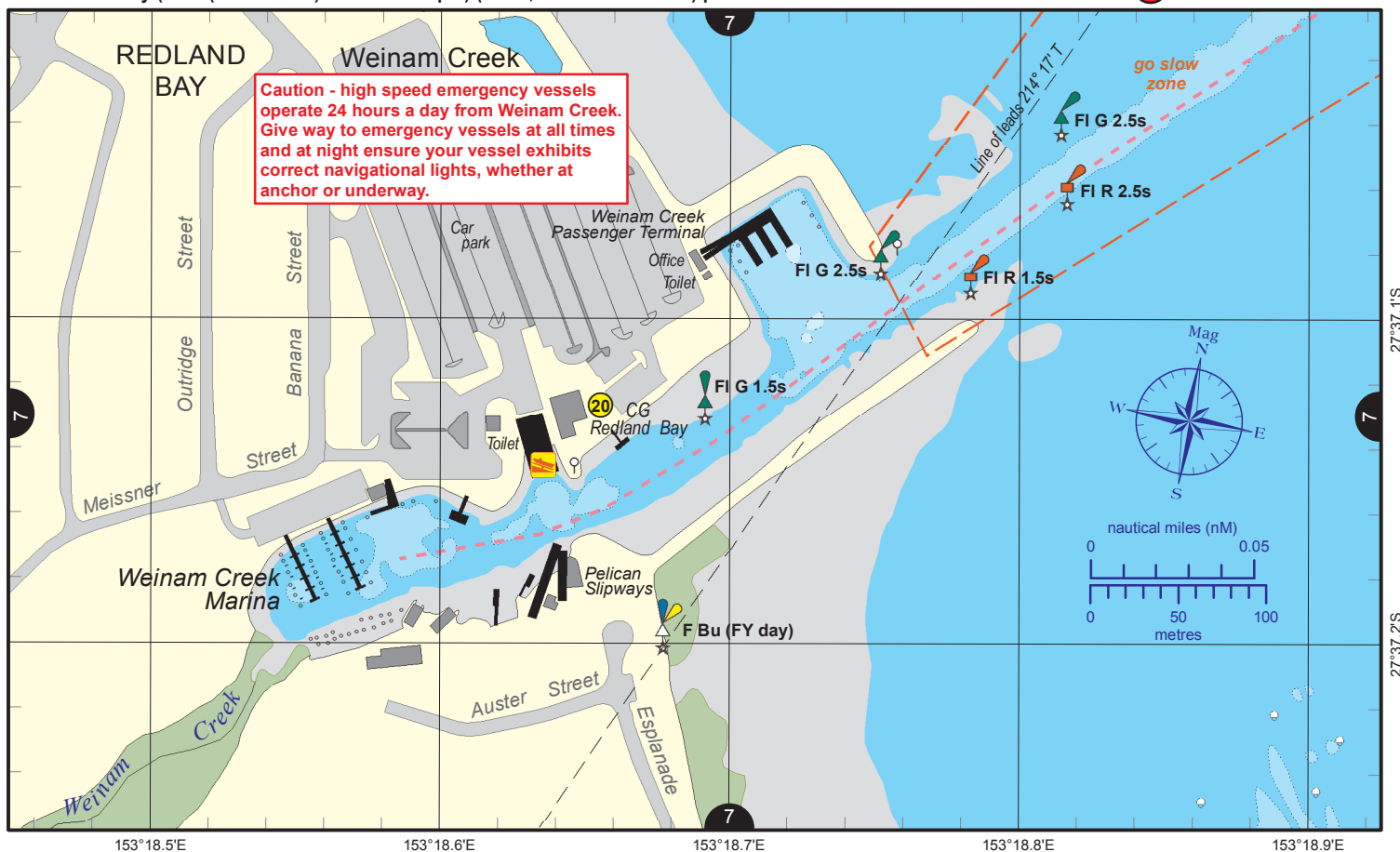
© Copyright The State of Queensland 2014

Queensland Department of Transport and Main Roads - Maritime Safety Queensland.

To reproduce any map within this series, see terms and conditions at Maritime Safety Queensland's website (www.msq.qld.gov.au)

Nautical information current to 16 June 2014.





Always keep a proper lookout when boating.

Look up and live for power and cable crossings that may not be shown on these maps due to scale or recent construction.

CAUTION: depth contours have not been re-surveyed in most areas since the 2011 and 2013 floods.

Exercise care when travelling outside suggested navigation tracks.

Nautical information current to 16 June 2014.

© Copyright The State of Queensland 2014

Queensland Department of Transport and Main Roads - Maritime Safety Queensland.

To reproduce any map within this series, see terms and conditions at Maritime Safety Queensland's website (www.msq.qld.gov.au)

